

Next Generation Silent Pump

Portable Pumping Station



For pumping applications where noise levels must be kept to a minimum, Gorman-Rupp offers a sound-attenuated engine-driven pump unit. This next generation of our Silent Pump line has been expanded to include your choice of Gorman-Rupp's Super T Series® or Prime Aire® pump.

Lockable doors prevent unauthorized personnel from tampering with the pump, fuel, engine or controls during unattended service.

Fuel capacity allows for a minimum of 24 hours of continuous operation.

All units feature a lightweight, corrosion-resistant aluminum enclosure that is acoustically treated to maintain noise levels as low as 63 dBA while operating at full load. Our environmentally engineered Silent Pump units operate much quieter than current industry standards.

Super T Series® Pump

Silent Pump units with Super T Series® pumps have all the features and benefits of our very popular self-priming pump line, including external shimless wearplate adjustment, removable coverplate with "easy grip" handle and a removable rotating assembly.



The Super T Series Silent Pump is available with optional air release and discharge check valves. These valves are conveniently located inside the enclosure, minimizing the chance of freezing or vandalism.

Prime Aire® Pump

Silent Pump units with Prime Aire® priming assist pump ends use Gorman-Rupp's venturi and compressor priming system, patented dual-suction pump chamber (6" model only) and dry-run seal, making this version well suited for applications involving long suction lines, intermittent flows or air-laden fluids.

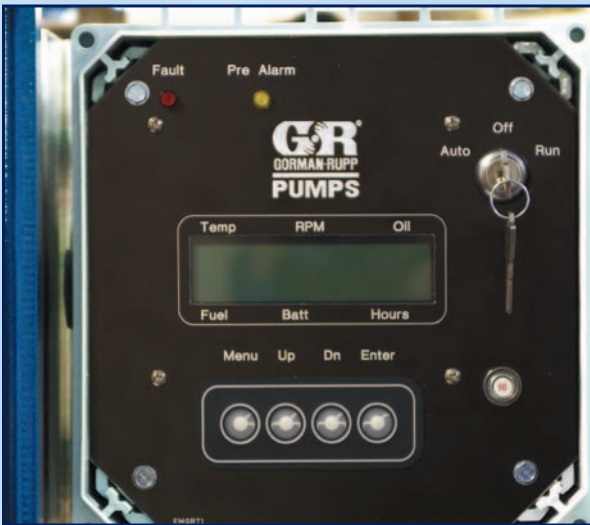
All Gorman-Rupp Prime Aire® next generation Silent Pump units ship standard with a discharge check valve.





Environmental Base

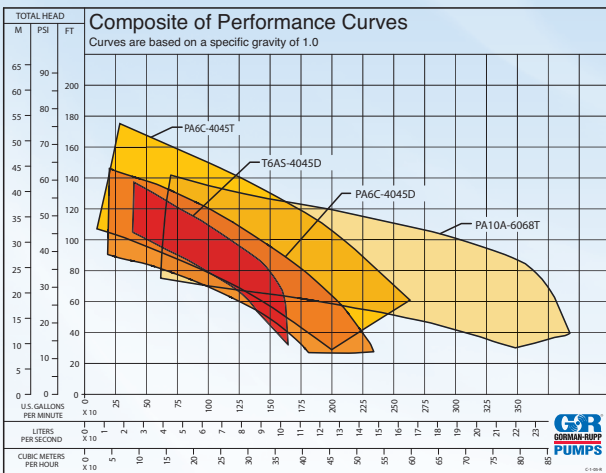
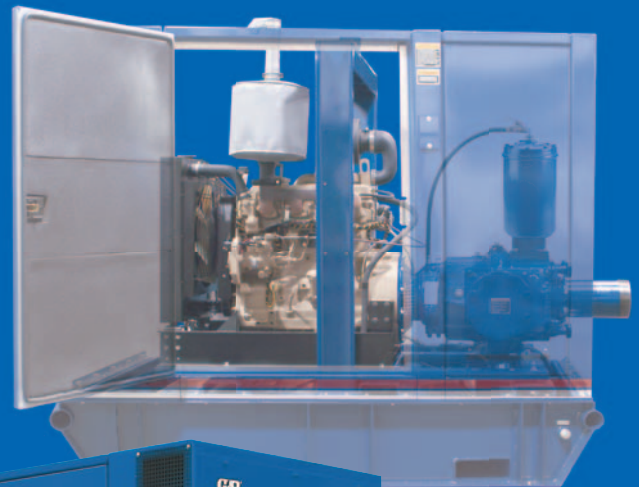
Gorman-Rupp's revolutionary environmental base captures fluids should a leak occur, eliminating costly clean-ups. Drain ports are conveniently located in the base to allow for servicing.



Controls

A state-of-the-art microprocessor-based digital engine control monitors all engine functions as well as alarms. The control features an easy-to-read 32-character display.

All models are equipped with the Auto-Start feature and a single-action float switch. Dual floats or Gorman-Rupp's exclusive EPS controller with submersible transducer are optional.



Optional DOT trailer with brakes, fenders and lighting.

